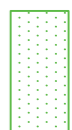

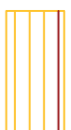
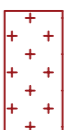



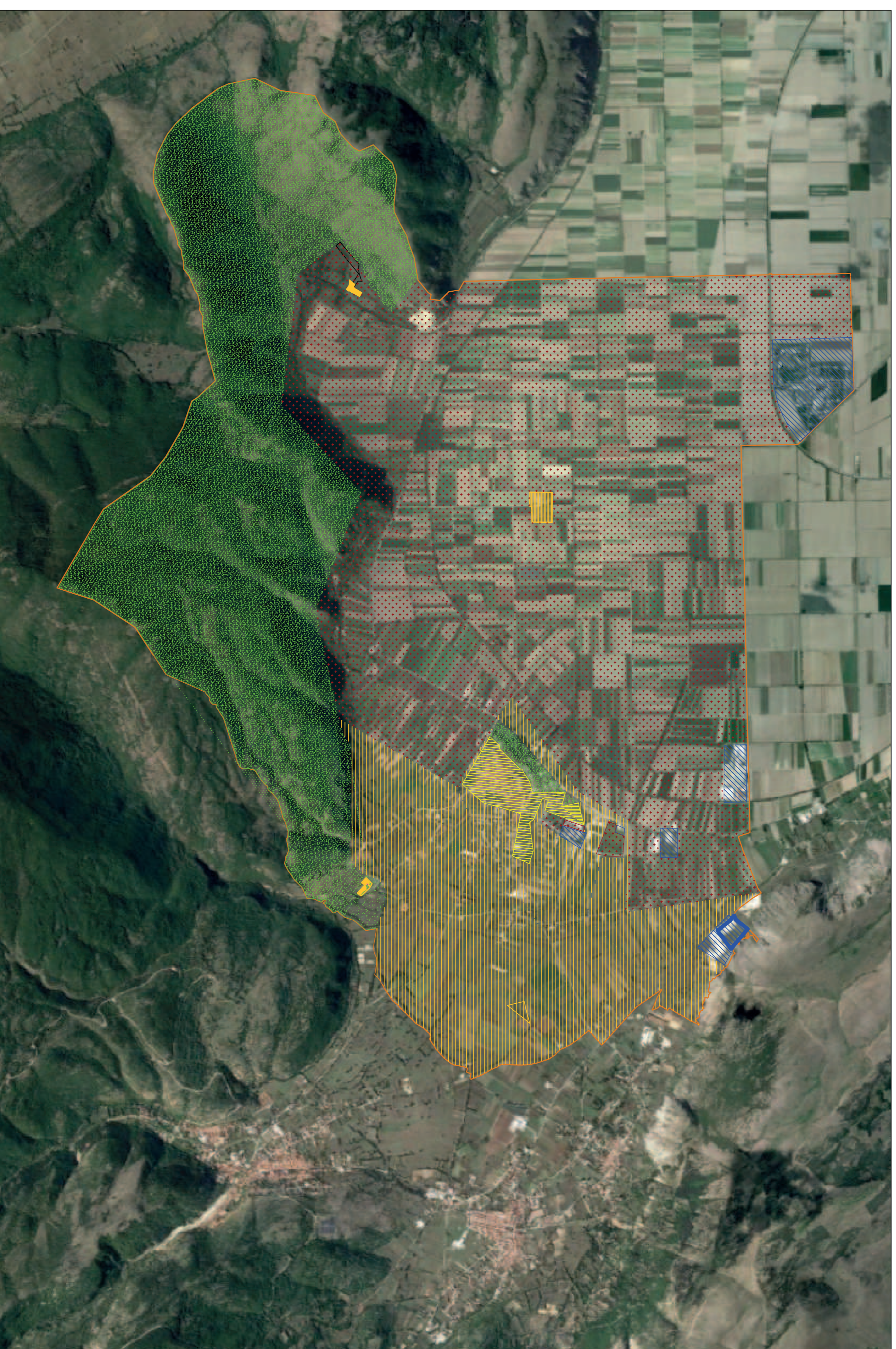
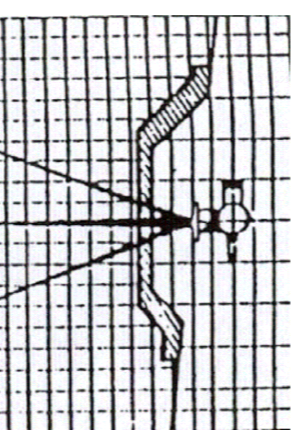


LEGENDA :

-  Aree particolarmente protette
-  Aree prevalentemente residenziali
-  Aree di tipo miste
-  Aree di intensa attività umana
-  Aree prevalentemente industriali
-  Aree esclusivamente industriali
-  Limite confini comunali

Limite confini comunali



 <p>dot. ing. Giovanni Maria De Prati via Luigi Villamari, 54 67051 AVEZZANO AQ n° tel. 0863.21362 fax n° 0863.442184</p>		COMMITTENTE		COMUNE DI ORTUCCHIO	
		PROGETTO		<small>Classificazione autorizzata del territorio comunale (escl. n° 447/95) (Attestamento Invenire C.I.G. ZI65341E0038 - Determina del Resp. Ue del Servizio Urbanistica n° 302/491 del 25.11.2023)</small>	
Comune	ORTUCCHIO	Provincia	L'AQUILA		
Designazione	CLANGO-2022				
TAVOLA	001 - Bis	Quadro d'intime			
scala	1:25.000	Note:			
DATA	27.05.2022				
<small>IL TECNICO COMPETENTE (Regione Abruzzo n°126 determinazione n°DF2/74 del 10.05.2004 ELENCO NAZIONALE N°1359)</small>					
<small>Dot. Ing. Giovanni Maria De Prati</small>					
